

Executive Summary

- 1. Terror organizations within the Gaza Strip intentionally place their terror infrastructure within the civilian population to provide cover and protection to their activities.**
- 2. Hamas doesn't hide this – Yahya Sinwar, the leader of Hamas in the Gaza Strip, has publicly stated that the organization is located within the civilian population.**
- 3. As part of this strategy, terror organizations exploit their proximity to medical facilities and UN sites.**
- 4. The following slides highlight this, showing Hamas launching sites, tunnels, and manufacturing sites near civilian sites.**

Hamas tunnels near civilian facilities



Tunnels adjacent to medical facilities



Hospital

Medical
Clinic



Terror infrastructure adjacent to civilian sites



UN Vocational
Training
Center

A-Shawa Gas
Station

Khalil A-
Rahman
Mosque

Collapse resulting from a tunnel strike, near civilian sites



Al-we'aam
Hospital ("The
Jordanian
Hospital")

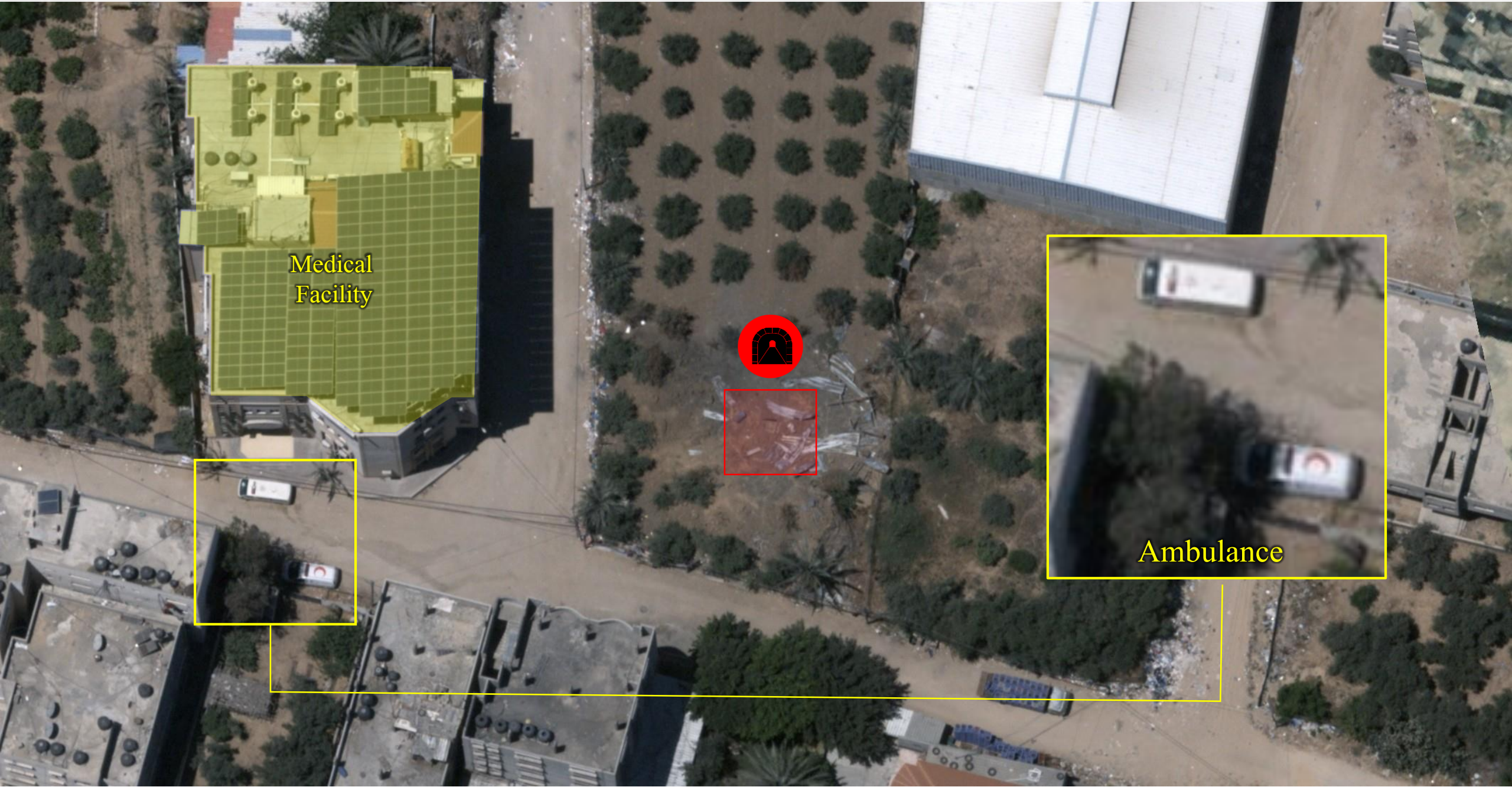
Embassy
of Tunisia

The
Ruqayya
School

Hamas terror infrastructure adjacent to a school and mosque



Tunnel opening near a medical site



Medical Facility



Ambulance

Terror infrastructure near medical facilities



Ambulance

Medical Facility