

OPERATION AL FAJR



The Battle of Fallujah

Damage Prevention

- Organizational Actions
 - Proper Preparation
 - Planning and Rehearsals
 - Detailed Orders and Instructions
 - Coordination and Focus of Resources – Leveraging Technology
 - Opportunity Driven Operations
 - Intent Driven
 - Flexible and Adaptable
 - Operational Risk Management
 - Consequence and Probability of Occurrence
 - Mitigation
 - Leadership and Supervision
- Individual Actions
 - Professional Training and Execution
 - Initiative Driven - Creativity
 - Courageous Leaders
 - Responsible Action
 - Standards of the Nation

Background

- Fallujah

- Center of Criminal Activity
- Isolated City
- Infrastructure in Shambles

- Timeline

- Ambush of “Blackwater” Contractors (31 March 04)
- Operation Vigilant Resolve (April 04)
- Fallujah Brigade Stands-up

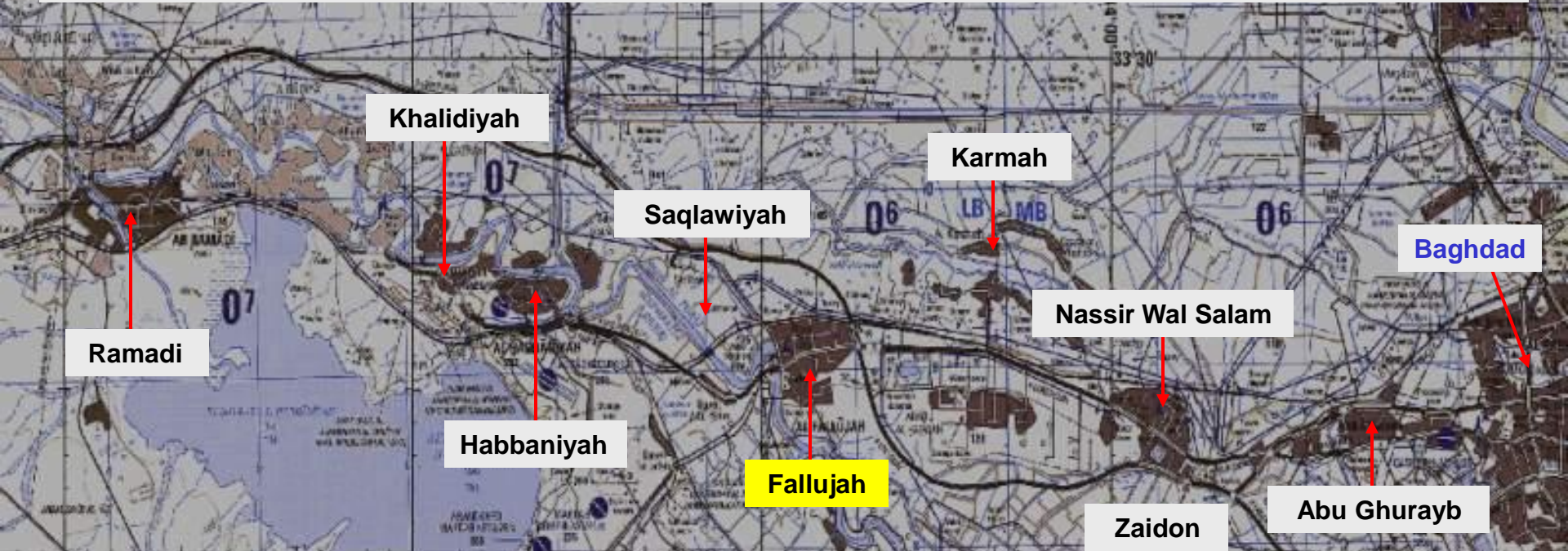
- Enemy Forces

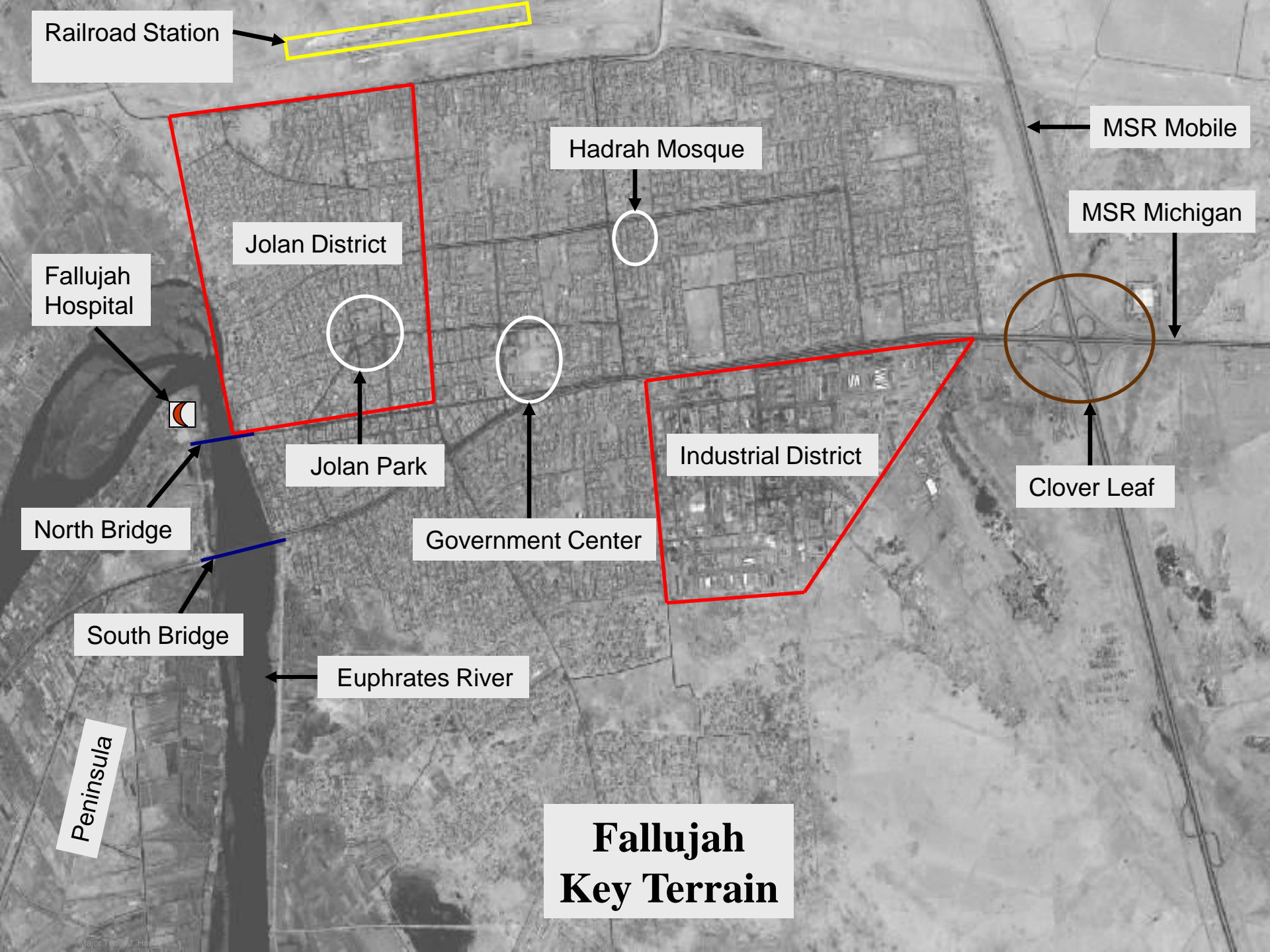
- Former Regime Elements
- Islamic Extremists
- Tribes
- Criminal Elements





Fallujah and Surrounding Cities





Railroad Station



Hadrah Mosque



Jolan District



Fallujah Hospital

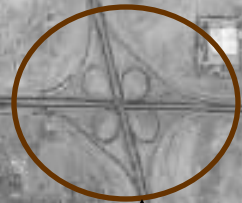


Jolan Park



Industrial District

Clover Leaf



MSR Mobile

MSR Michigan

North Bridge

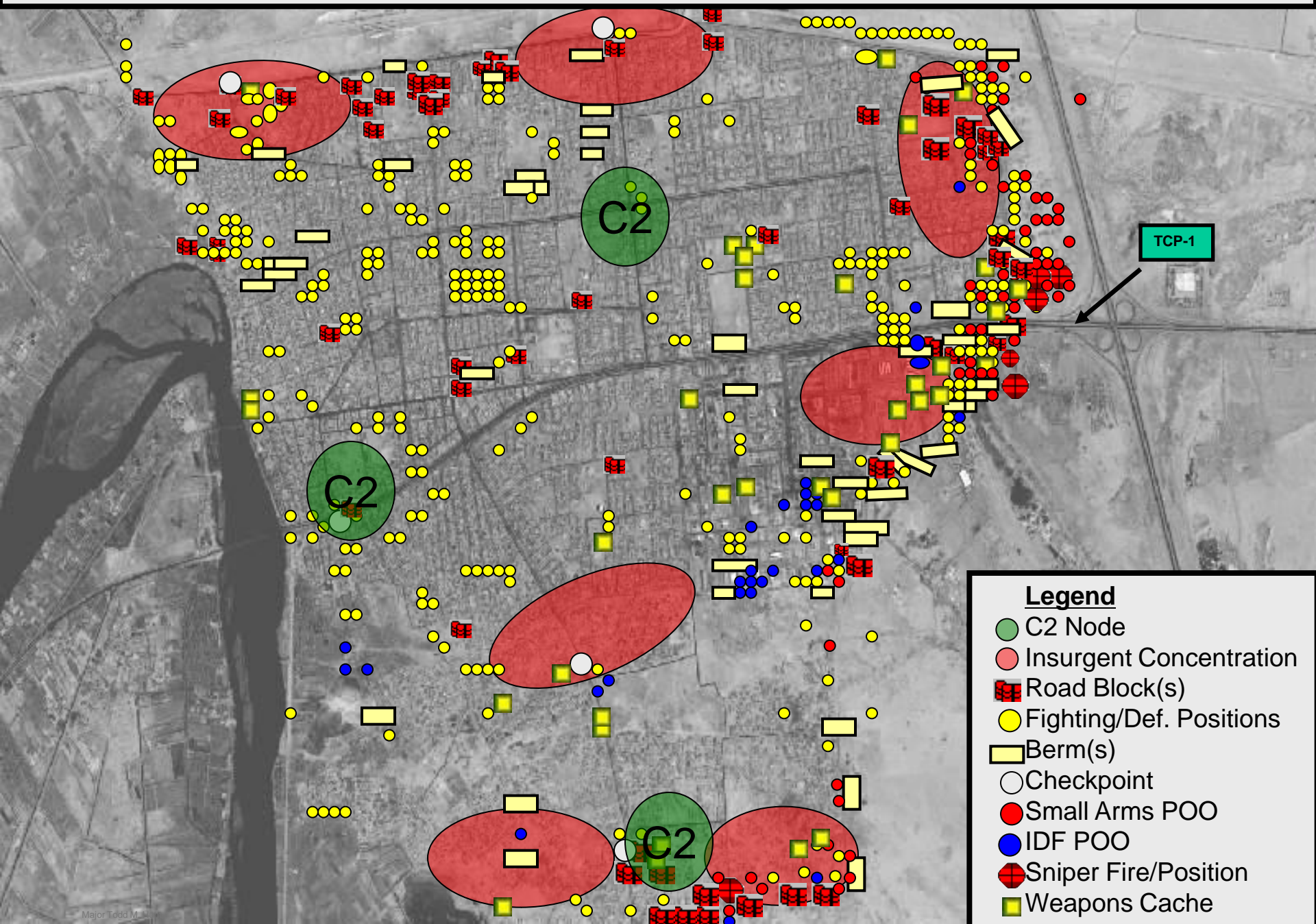
South Bridge

Euphrates River

Peninsula

Fallujah Key Terrain

FALLUJAH THREAT OVERVIEW (OCTOBER 2004)



Legend

- C2 Node
- Insurgent Concentration
- Road Block(s)
- Fighting/Def. Positions
- Berm(s)
- Checkpoint
- Small Arms POO
- IDF POO
- Sniper Fire/Position
- Weapons Cache

Mission

AT H HOUR ON D+1, 1ST MARINE DIVISION (-)
(REIN) ATTACKS TO DESTROY ANTI-IRAQI
FORCES IN FALLUJAH IN ORDER TO ESTABLISH
LEGITIMATE LOCAL CONTROL



Task Organization

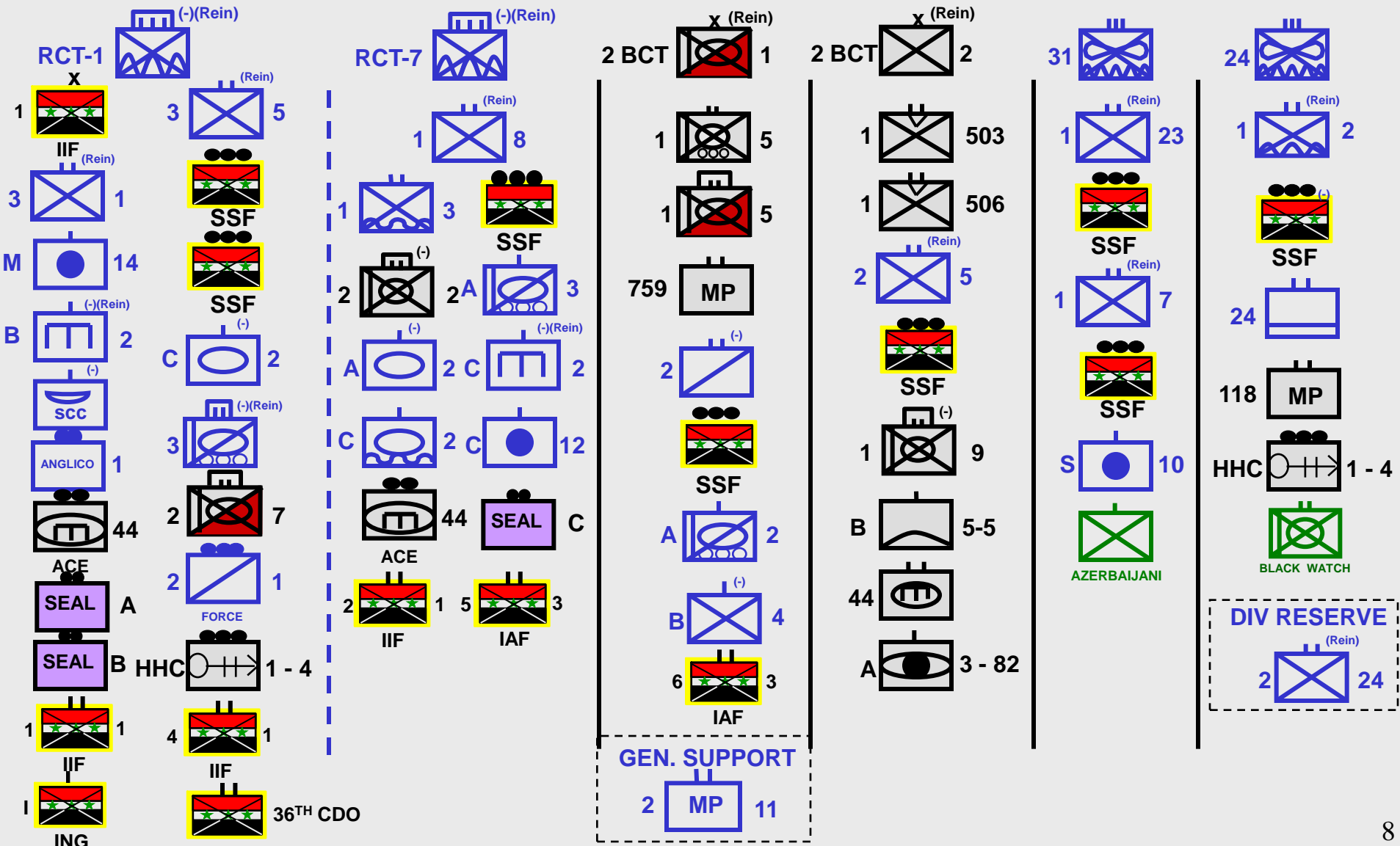
Fallujah

Fallujah Environs

Ramadi

Western AO

N. Babil



PHASE I

(Preparation/Shaping)

- **OPERATIONAL PLANNING**
 - ROC DRILLS/REHEARSAL
- **MOVEMENT OF FORCES**
 - RIP/ BATTLE HANDOVERS WITHIN THE DIVISION AO
 - BLACK WATCH TO NORTH BABIL
- **INTEGRATION**
 - IRAQI SECURITY FORCES
 - U.S. ARMY UNITS
 - JOINT SPECIAL OPERATION SNIPERS
- **FSSG BUILDS IRON MOUNTAIN**



- SET CONDITIONS FOR SUCCESS -

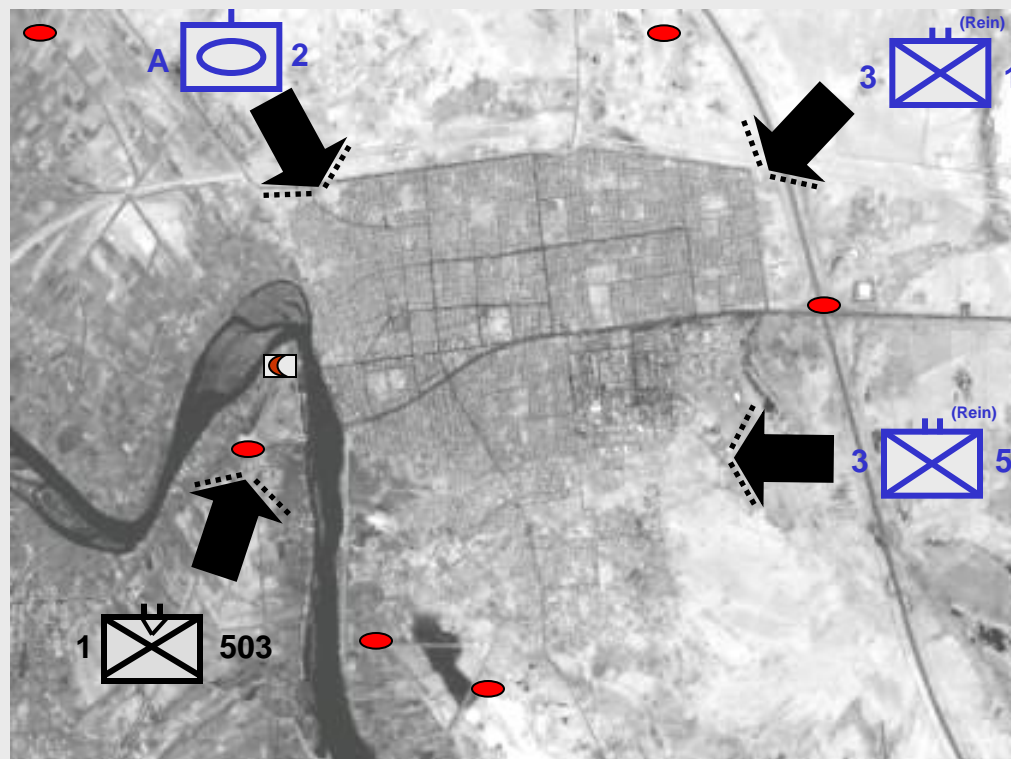
PHASE I

(Preparation/Shaping)

- FEINTS
- RAIDS
- CORDON AND SEARCHES
- VEHICLE CHECKPOINTS (VCPS)
- INDIRECT FIRES AND CAS
- INFORMATION OPS AND PSYOPS
- TARGETING OF AIF LEADERSHIP
- SPECIAL OPERATION FORCES
- TARGETING OF HIGH-VALUE TARGETS

DESIRED ENEMY ENDSTATE

- CONFUSED AS TO MNF INTENTIONS
- WEDGE DRIVEN BETWEEN POPULACE AND AIF
- C² NODES EXPOSED AND DESTROYED
- DEFENSES IDENTIFIED
- HEIGHTENED STATE OF PARANOIA AND ANXIETY

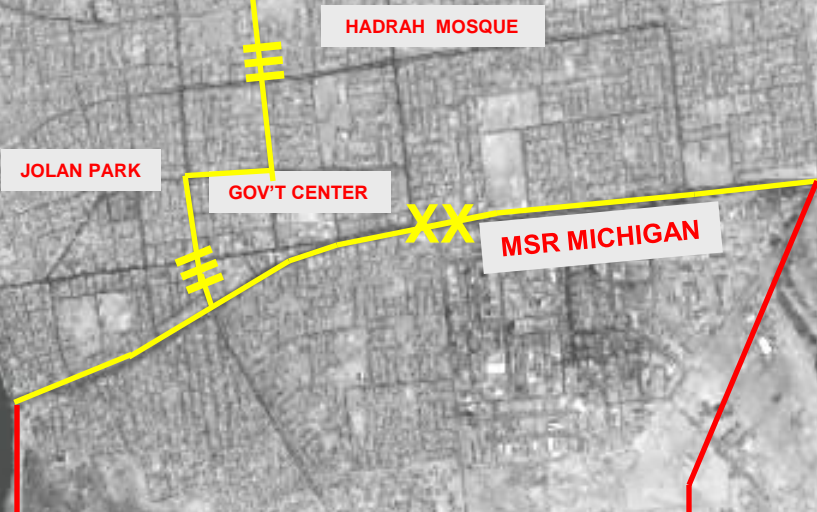
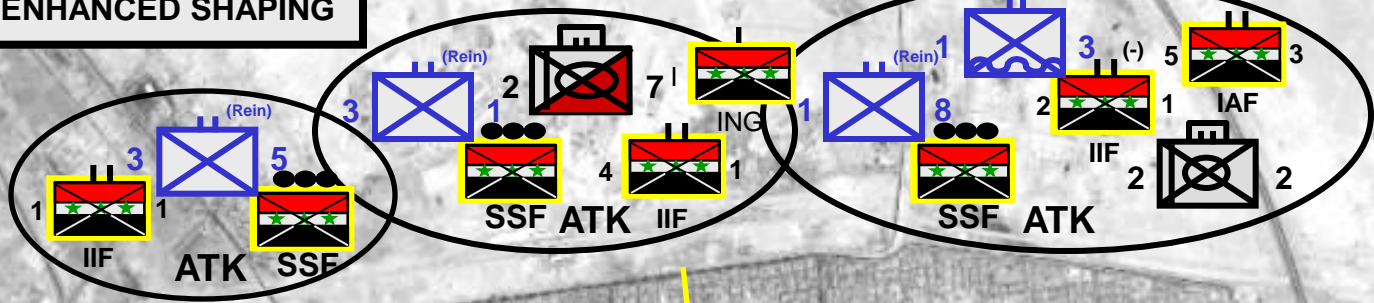


PHASE II D-DAY (7 NOV 04) (Enhanced Shaping)

- **ISOLATION OF FALLUJAH BY BLACK JACK BRIGADE**
- **MOVEMENT OF FORCES INTO ATTACK POSITIONS**
- **JOINT FIRES**
- **ELECTRONIC ATTACK**
- **PENINSULA ASSAULT**
 - **FALLUJAH HOSPITAL SECURED**
 - **BRIDGES SECURED/BLOCKING POSITIONS ESTABLISHED**

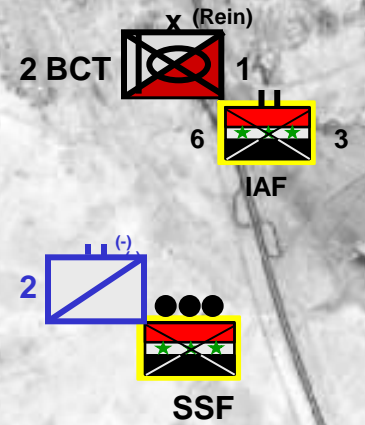


PHASE II ENHANCED SHAPING



36 CDO

ME: RCT- 1 (-)(REIN)
 •ON D-DAY BLOCK ACCESS TO THE PENINSULA
 •MOVE INTO ATTACK POSITIONS
TF 3RD LAR
 •AT H-HOUR (1900L) ON D-DAY, ATTACK IN ZONE TO SECURE THE PENINSULA
 •NLT H+6 ESTABLISH BLOCKING POS IVO OF (2) BRIDGES
36 CDO
 •NLT H+8, SEIZE FALLUJAH HOSPITAL
SE1: RCT-7 (-)(REIN)
 •MOVE INTO ATTACK POSITIONS
SE2: BLACK JACK BDE
 •GUARD MOVEMENT OF ASSAULT BNs INTO APs
 •INTERDICT INSURGENTS IN AO RALEIGH
 •BLOCK SOUTH/SOUTHEAST OF FALLUJAH



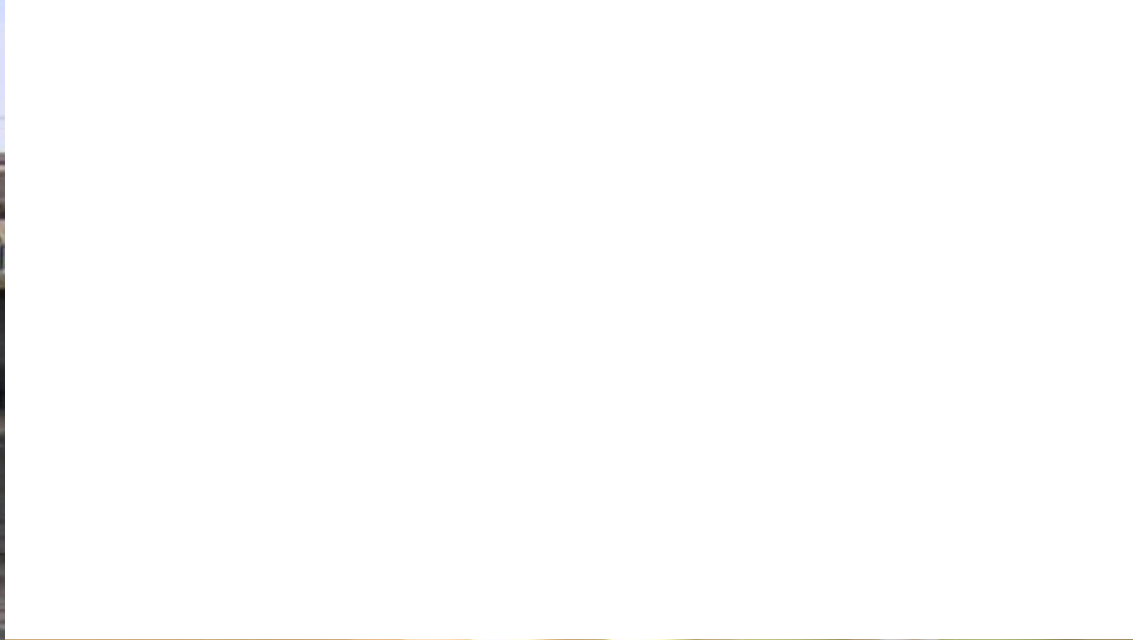


PHASE III D+1 (8 NOV 04) (Assault)

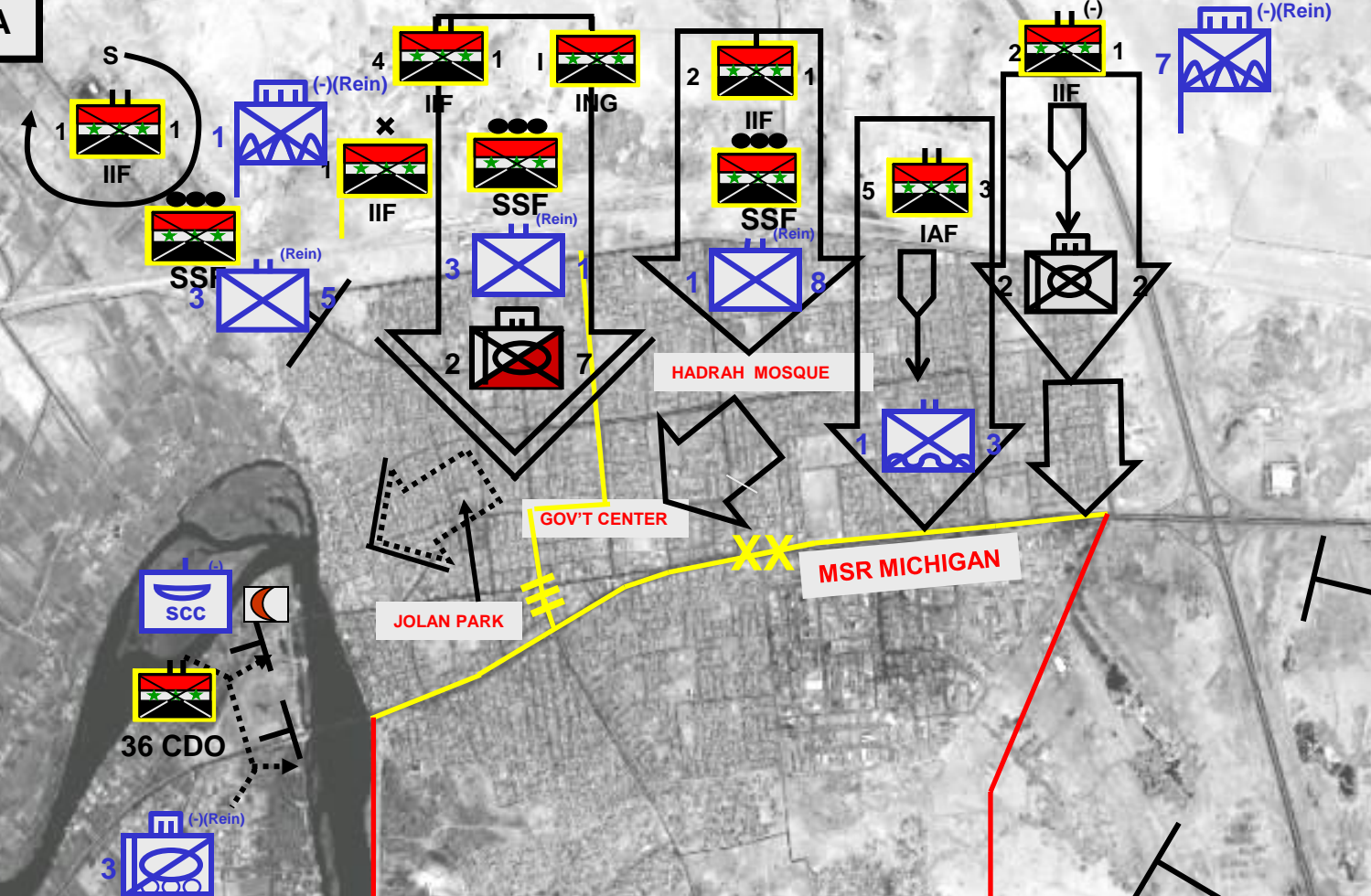
- **RAPID PENETRATION INTO CITY**
 - **EXPLOIT SHOCK, FIREPOWER, AND MOBILITY OF ARMORED FORCES**
 - **COMBINED ARMS ATTACK**
 - **ARMY/MARINE ARTILLERY**
 - **JOINT CLOSE AIR SUPPORT**
- **SEARCH AND ATTACK IN ZONE**
- **BLACK JACK BRIGADE CONTINUES TO ISOLATE FALLUJAH AND PROTECT DIVISION REAR AREA**
- **INTELLIGENCE EXPLOITATION**
- **INFORMATION OPERATIONS**



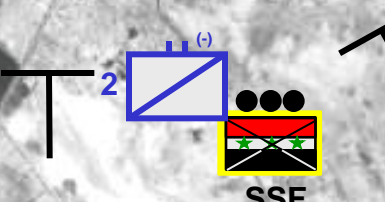
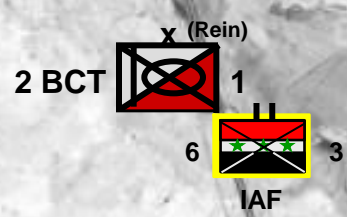




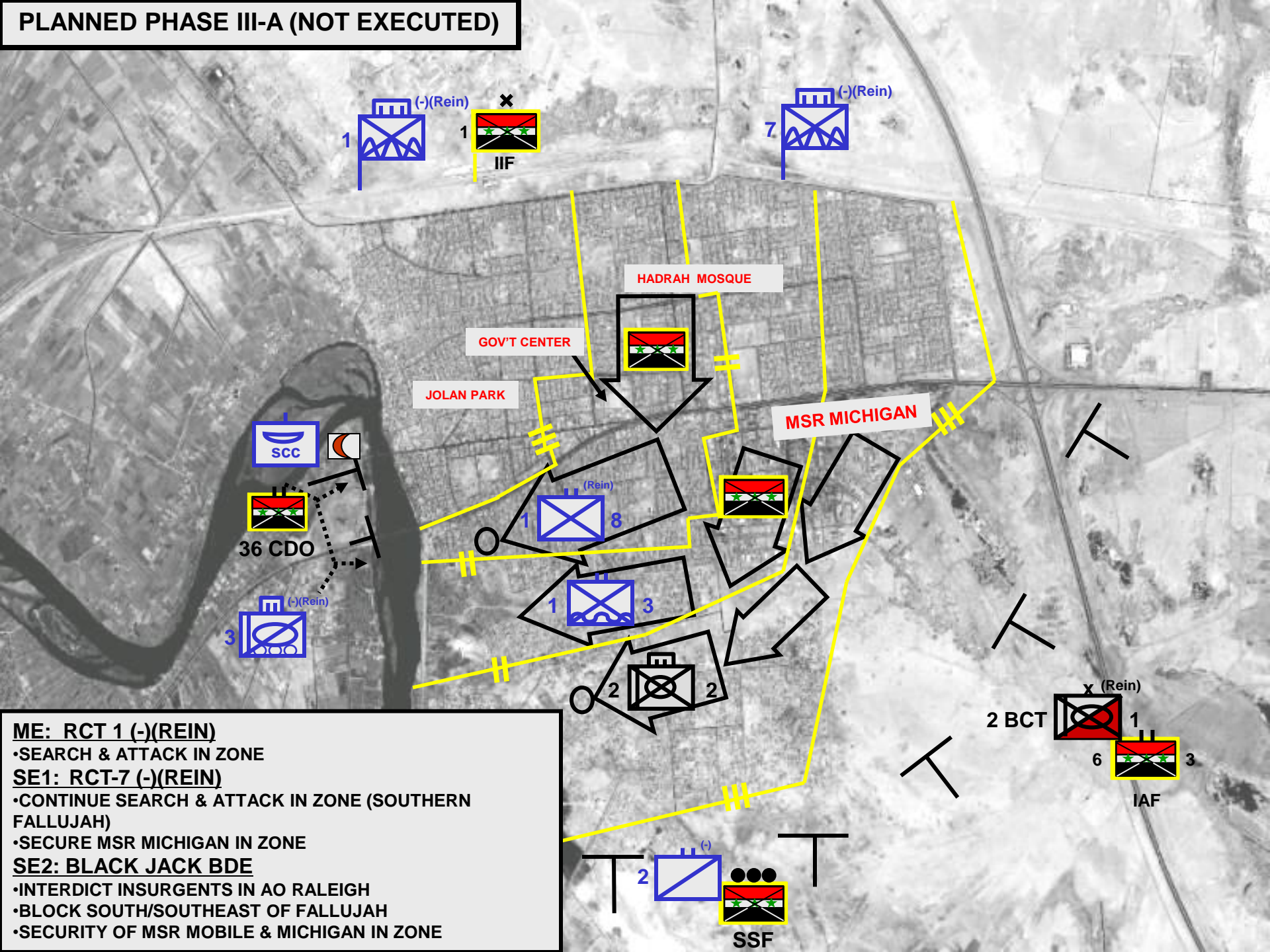
PHASE III-A



- ME: RCT 1 (-)(REIN)**
 • AT A-HOUR (1900L) ON D+1, CONDUCT PENETRATION IN ZONE
 • CONTINUE ATTACK TO SECURE JOLAN DISTRICT
- SE1: RCT-7 (-)(REIN)**
 • AT A-HOUR, CONDUCT PENETRATION IN ZONE TO SEIZE HADRAH MOSQUE & GOV'T CENTER
 • SECURE MSR MICHIGAN IN ZONE
- SE2: BLACK JACK BDE**
 • INTERDICT INSURGENTS IN AO RALEIGH
 • BLOCK SOUTH/SOUTHEAST OF FALLUJAH
 • SECURITY OF MSR MOBILE & MICHIGAN IN ZONE



PLANNED PHASE III-A (NOT EXECUTED)



ME: RCT 1 (-)(REIN)
 •SEARCH & ATTACK IN ZONE

SE1: RCT-7 (-)(REIN)
 •CONTINUE SEARCH & ATTACK IN ZONE (SOUTHERN FALLUJAH)
 •SECURE MSR MICHIGAN IN ZONE

SE2: BLACK JACK BDE
 •INTERDICT INSURGENTS IN AO RALEIGH
 •BLOCK SOUTH/SOUTHEAST OF FALLUJAH
 •SECURITY OF MSR MOBILE & MICHIGAN IN ZONE

1 (-)(Rein) x
 1 IIF

7 (-)(Rein)

HADRAH MOSQUE

GOV'T CENTER

JOLAN PARK

MSR MICHIGAN

SCC

36 CDO

3 (-)(Rein)

1 (Rein) 8

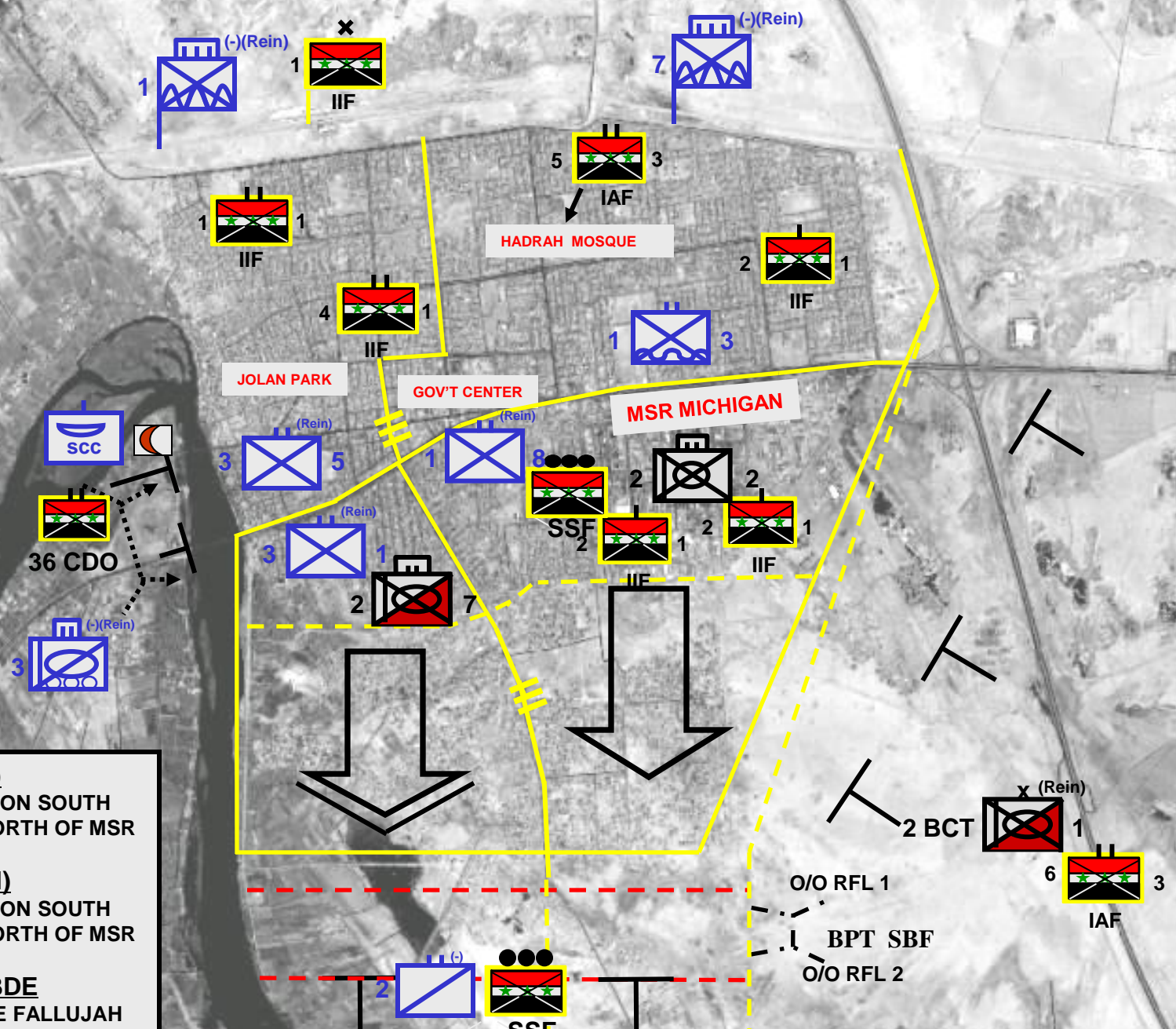
1 3

2 2

x (Rein)
 2 BCT 1
 6 3
 IAF

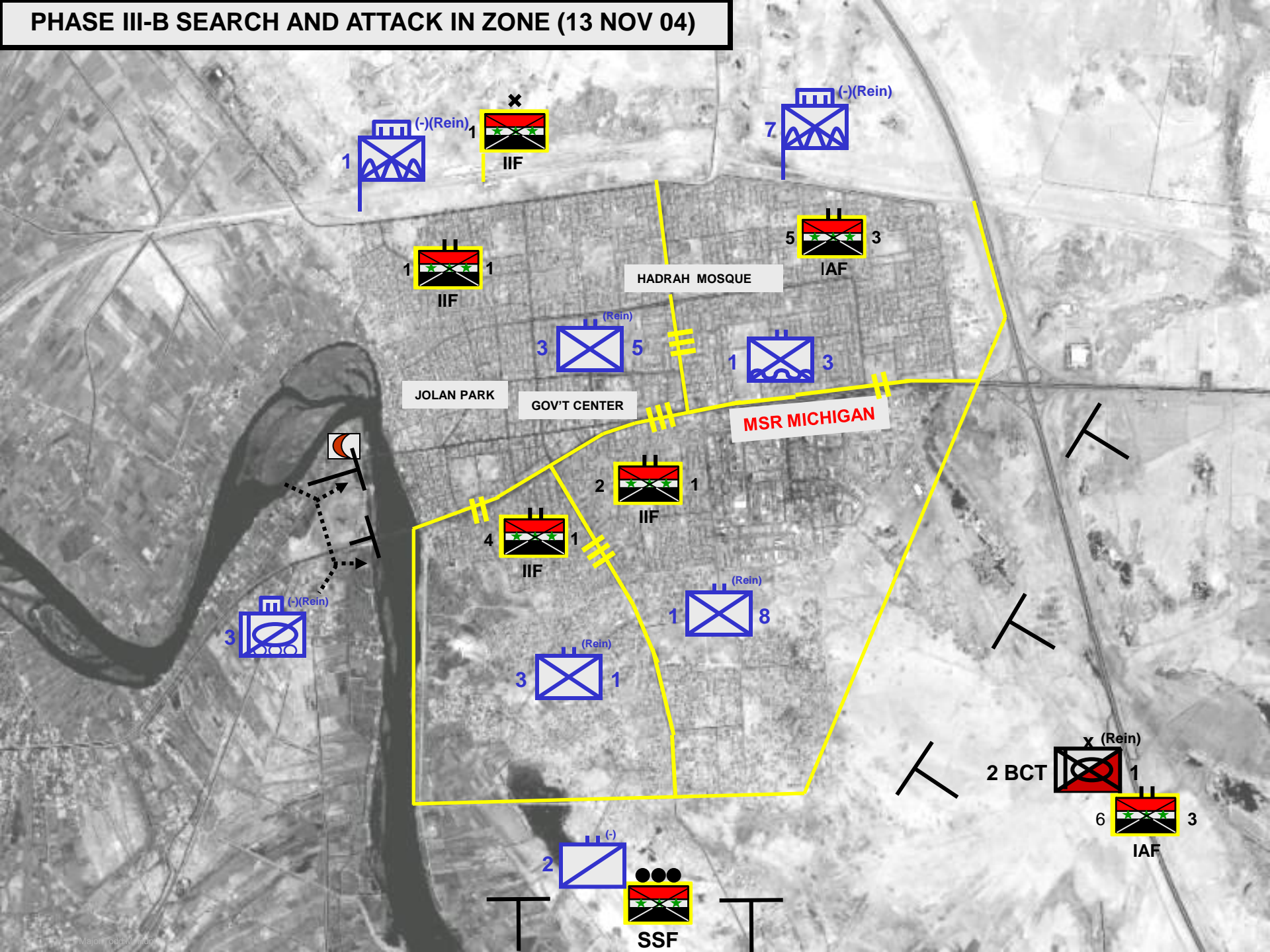
2 (-)
 SSF

PHASE III-A BRANCH PLAN (EXECUTED 11 NOV)



- ME: RCT-1 (-) (REIN)**
- CONTINUE PENETRATION SOUTH
- SEARCH & ATTACK NORTH OF MSR MICHIGAN
- SE1: RCT-7 (-) (REIN)**
- CONTINUE PENETRATION SOUTH
- SEARCH & ATTACK NORTH OF MSR MICHIGAN
- SE2: BLACKJACK BDE**
- CONTINUE TO ISOLATE FALLUJAH

PHASE III-B SEARCH AND ATTACK IN ZONE (13 NOV 04)



1 (-)(Rein) 1
IIF

x
IIF

7 (-)(Rein)

1 IIF 1

HADRAH MOSQUE

5 IAF 3

JOLAN PARK

3 (Rein) 5

GOV'T CENTER

1 3

MSR MICHIGAN



2 IIF 1

4 IIF 1

3 (-)(Rein)

1 (Rein) 8

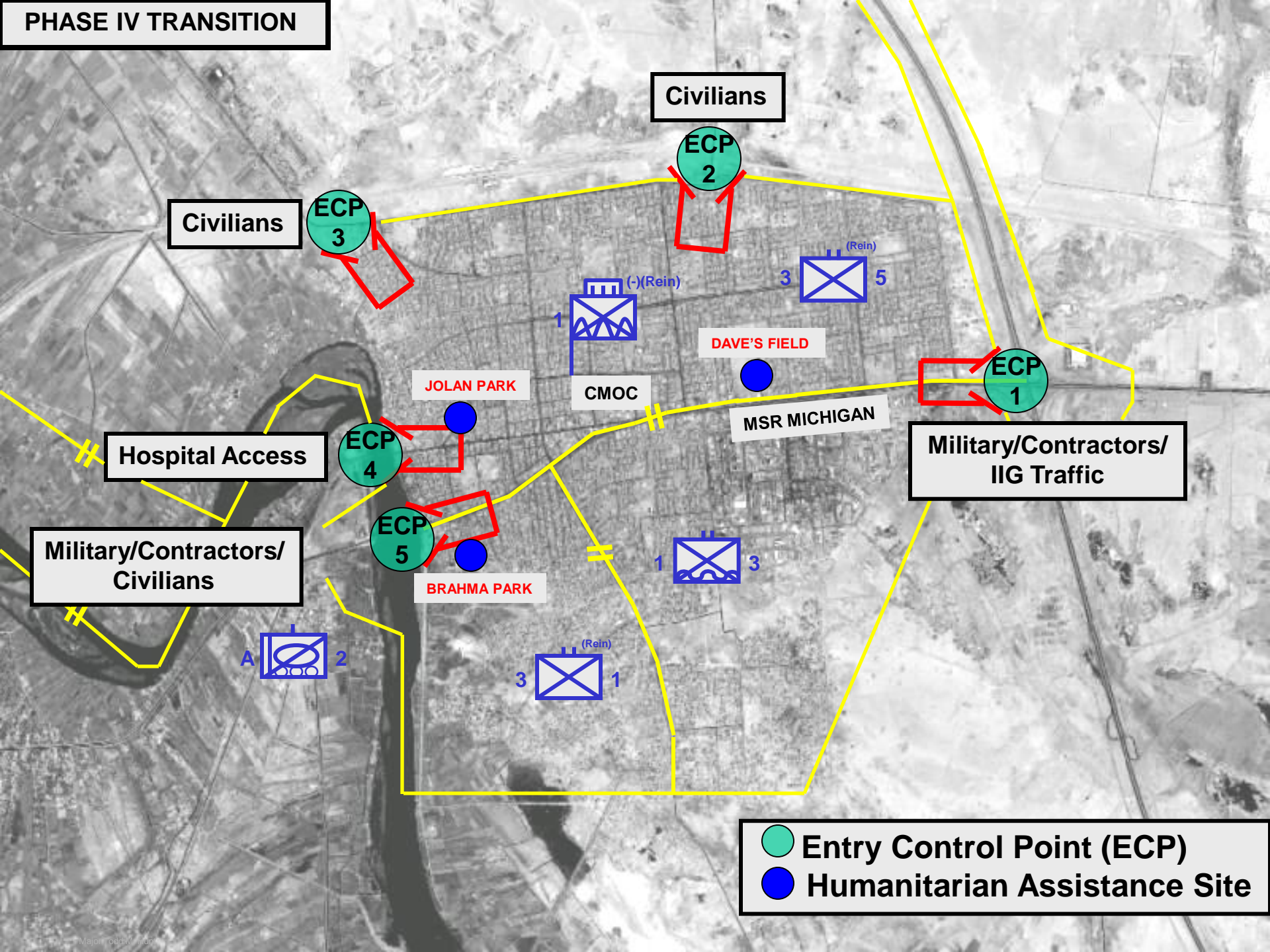
3 (Rein) 1

x (Rein) 1
2 BCT

6 IAF 3

2 (-)
SSF

PHASE IV TRANSITION



Civilians

Civilians

Military/Contractors/
IIG Traffic

Hospital Access

Military/Contractors/
Civilians

● Entry Control Point (ECP)
● Humanitarian Assistance Site

Enemy Tactics

DEFENSIVE BELTS

- DAISY CHAINED IEDs
- SMALL UNIT STRONGPOINTS
- USE OF PROTECTED SITES (e.g. MOSQUES, SCHOOLS)
- TUNNEL SYSTEMS
- WEAPONS CACHES
- HIT AND FALL BACK
- INDIRECT FIRE
- FALSE SURRENDER
- DRUG USE

ATTRITION

- VBIED OR SUICIDE BOMBERS
- BOOBY-TRAPS
 - BUILDINGS/CACHES
 - INSURGENTS (DEAD AND WOUNDED)
- SNIPERS
- LAST STAND POSITIONS



SUICIDE VESTS

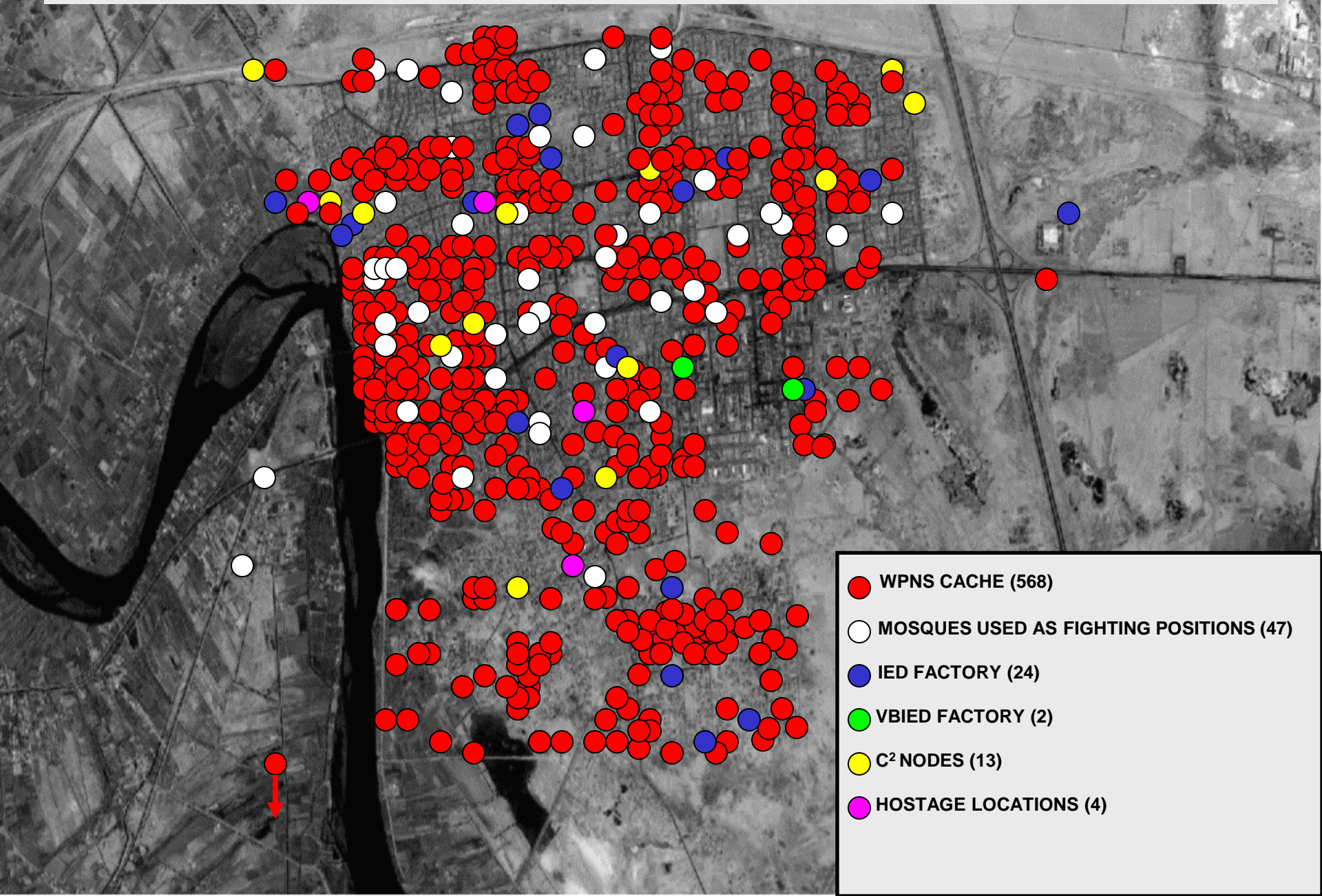


IEDs

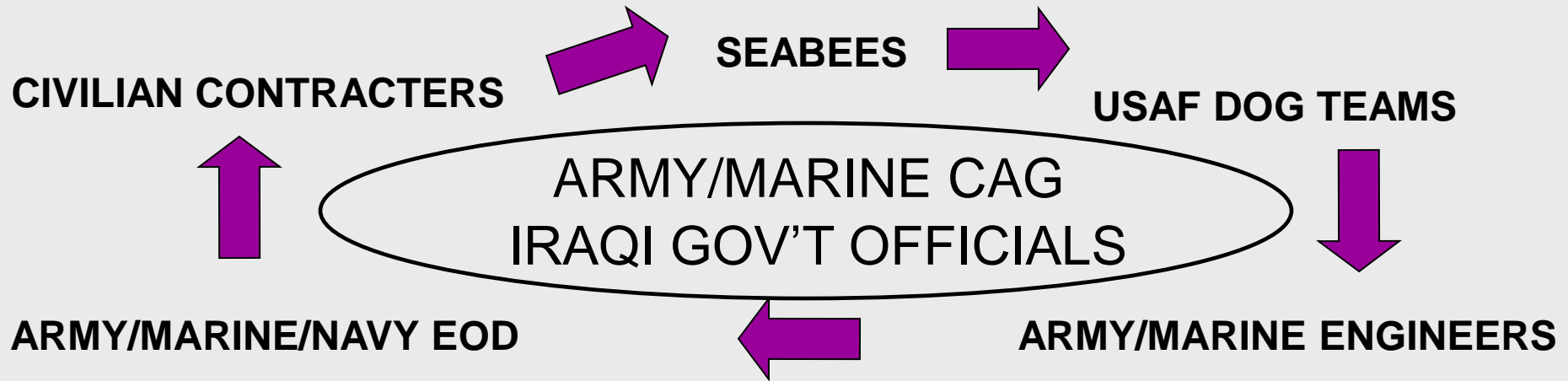


WEAPONS CACHE

1ST MARDIV DISCOVERIES IN FALLUJAH



PHASE III INTO PHASE IV



- ESTABLISH CMOC
- REMAINS REMOVAL
- FOOD DISTRIBUTION
- EOD/CACHE CLEARANCE
- WATER REMOVAL
- RUBBLE REMOVAL
- CONTINUE CLEARING OPERATIONS
- SANITATION IMPROVEMENTS
- ELECTRICAL GRID REPAIRS
- PEST CONTROL
- ENTRY CONTROL POINTS ESTABLISHED



Population Resettlement

- **PHASED RETURN BY DISTRICT**

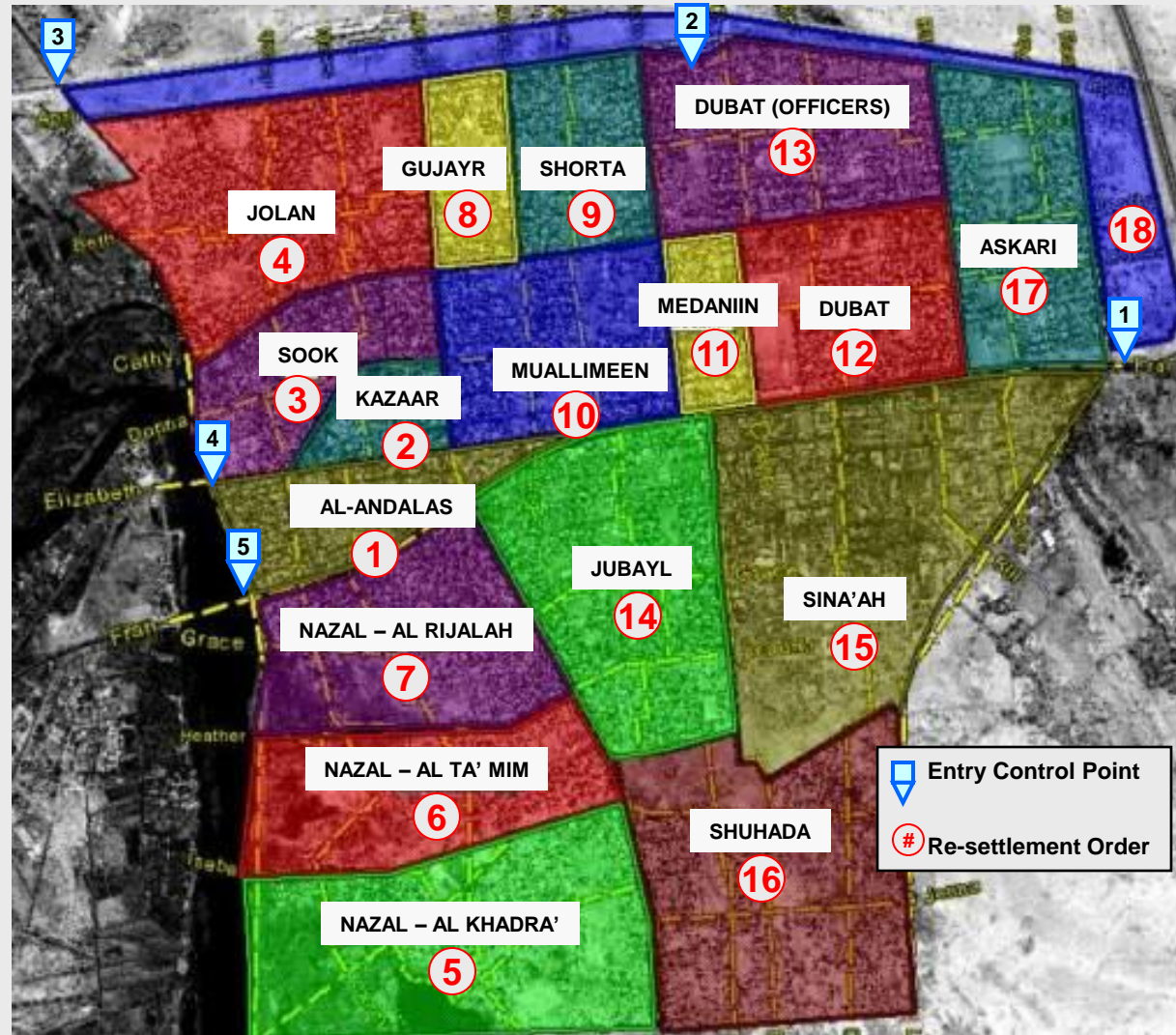
(23 DEC 04 – 14 JAN 05)

- LINKED TO HUMANITARIAN RESOURCES & SECURITY

- **CIVIL AFFAIRS PROVIDED BASIC NEEDS FOR RETURNING CITIZENS**

- **ISF AND MNF PROVIDED SECURITY & HUMANITARIAN ASSISTANCE**

- **RESTORATION OF BASIC SERVICES (UTILITIES/MEDICAL)**



Elections in Fallujah

- **30 JANUARY 05**
- **FIVE POLLING CENTERS**
- **IECI VOLUNTEERS**
- **SIGNIFICANT VOTER TURN-OUT
DESPITE SUNNI BOYCOTT AND
INSURGENT INTIMIDATION**
- **ISF PROVIDED SECURITY**



